



NEW MEXICO PERFORMING ARTS SOCIETY

Franz Vote, Artistic Director and Conductor

Thirteenth Season 2024-2025

ANNUAL NEW MEXICO BACH SOCIETY CONCERT



ST. JOHN PASSION, BWV 245

Friday, September 6, 2024 ~ 6:00 pm

Immaculate Heart of Mary Chapel, 50 Mt. Carmel Road, Santa Fe

Sunday, September 8, 2024 ~ 5:30 pm

Hope in the Desert Episcopal Church, 8700 Alameda NE, Albuquerque

The New Mexico Bach Society's St. John Passion Project is sponsored by Aaron Alter, Norman & Suzanne George, Bernhard Holzapfel, Peter Merrill & Ruth Wallack, Michael Middleton, New Mexico Arts and the Santa Fe Arts & Culture Department.

Keith K. Anderson

Registered
Investment Adviser

505-984-2563

keithkanderson@comcast.net
www.keithkanderson.com

2227 Calle Cacique
Santa Fe, NM 87505



COLDWELL BANKER
MOUNTAIN
PROPERTIES

MINDY DEMOTT
LUXURY PROPERTY SPECIALIST
ABR®, CRS, SANTA FE SPECIALIST

C: 505.501.2706
O: 505.988.7285

www.santafe.realestate
mindy.demott@cbmp.com

132 E Marcy St
Santa Fe, NM 87501

Each office is independently owned and operated



The Property Tax Advantage

Mike Middleton, President
Chris Middleton, Vice President

13029 Danielson Street, Suite 200
Poway, CA 92064
Tel: 858.679.7221 • Fax: 858.679.1563
Email: customerservice@protaxllc.com



FIRST FRIDAY at the COE

ABOUT US

- Indigenous Art from around the world
- In midtown Santa Fe
- First Fridays, 1-4 pm
- Private tours available
- No admission fees



Visit coeartscenter.org to Learn More!



COE CENTER®
info@coeartscenter.org | 505.983.6372
1590B Pacheco St, Santa Fe, NM 87505



NEW MEXICO PERFORMING ARTS SOCIETY

Annual New Mexico Bach Society Concert

Friday, September 6, 2024 ~ 6:00 pm

Immaculate Heart of Mary Chapel, 50 Mt. Carmel Road, Santa Fe, NM

Sunday, September 8, 2024 ~ 5:30 pm

Hope in the Desert Episcopal Church, 8700 Alameda NE, Albuquerque

JOHANN SEBASTIAN BACH (1685-1750)

St. John Passion, BWV 245

Evangelist: Gregory Gallagher

Peter: Andrew Paulson

Maid: Nancy Maret

Jesus: Javier Ortiz

Pilate: Tim Willson

Servant: Jonah Mendelsohn

Arias

Von den Stricken meiner Sünden

Ich folge dir gleichfalls

Ach mein Sinn

Betrachte, meine Seele

Erwäge, wie sein blutgefärbter Rücken

Eilt, eilt ihr angefochtenen Seelen

Es ist vollbracht

Mein teurer Heiland

Mein Herz, indem die ganze Welt

Zerfließe, mein Herze

Melissa Riedei

Amy Owens

André García-Nuthmann

Andrew Paulson

André García-Nuthmann

Javier Ortiz

Kehar Koslowsky

Andrew Paulson

Gregory Gallagher

Jennifer Perez

NEW MEXICO BACH SOCIETY

Franz Vote, *Artistic Director and Conductor*

New Mexico Bach Chorale

Soprano Nancy Maret*, Amy Owens*, Jennifer Perez*, Hannah Stephens

Alto Patricia Henning, Kehar Koslowsky*, Melissa Riedel*, Amanda Sidebottom

Tenor Gabriel Deyarmond, Gregory Gallagher*, André García-Nuthmann*, Jonah Mendelsohn

Bass Tjett Gerdorn, Javier Ortiz*, Andrew Paulson*, Tim Willson*

**vocal soloist*

New Mexico Bach Society Orchestra

Violin Elizabeth Baker, *concertmaster*; Lidja Peno Kelly, Jeffrey Smith

Violin II Carla Kountoupes, *principal*; Lisa Grodin; Alan Mar

Viola Joyce Huang, *principal*; Michael Anderson, Tori Anderson

Cello Sally Guenther, *principal*; Joel Becktell

Bass Bob Barney

Flute Linda Marianiello, Vicki Schaevitz

Oboe Kevin Darrow, Elaine Heltman

Continuo Matthew Sebald

The St. John Passion Project is sponsored by Aaron Alter, Norman & Suzanne George, Bernhard Holzapfel, Peter Merrill & Ruth Wallack, Michael Middleton, New Mexico Arts, the City of Santa Fe Arts & Culture Department and the 1% Lodgers Tax.



This project is supported in part by New Mexico Arts and
the City of Santa Fe Arts & Culture Department



THE CITY OF
SANTA FE
ARTS & CULTURE
DEPARTMENT

PART ONE

Prologue

Chorus: *Herr, unser Herrscher* / Lord, our ruler, whose glory is honored in all the lands

The Betrayal and Arrest in the Garden

Evangelist: *Jesus ging mit seinen Jüngern* / Jesus went with his disciples

Chorus: *Jesus von Nazareth* / Jesus of Nazareth

Evangelist: *Jesus spricht zu ihnen* / Jesus said to them

Chorus: *Jesus von Nazareth* / Jesus of Nazareth

Evangelist: *Jesus antwortete* / Jesus replied

Chorale: *O große Lieb* / O great love without measure

Evangelist: *Auf daß das Wort erfüllet würde* / In this way the Word was fulfilled

Chorale: *Dein Will gescheh, Herr Gott* / Thy will be done, Lord God

Evangelist: *Die Schar aber und der Oberhauptmann* / But the soldiers and their commander

Aria (A): *Von den Stricken meiner Sünden* / From the bonds of my sins

Evangelist: *Simon Petrus aber folgte Jesu nach* / But Simon Peter also followed Jesus

Aria (S): *Ich folge dir gleichfalls* / I follow you likewise

Evangelist, Woman, Peter, Jesus, Servant: *Derselbige Jünger war dem Hohenpriester bekannt* /

This disciple was known to the chief priest

Chorale: *Wer hat dich so geschlagen* / Who has struck you in this way

Evangelist: *Und Hannas sandte ihn gebunden* / And Annas sent him bound

Chorus: *Bist du nicht seine Jünger einer?* / Are you not one of his disciples?

Evangelist, Peter, Servant: *Er leugnete aber und sprach* / But he denied it and said, "I am not!"

Aria (T): *Ach, mein Sinn* / Ah, my soul

Chorale: *Petrus, der nicht denkt zurück* / Peter, without thinking, denied his God

~ Intermission ~

PART TWO

Prologue

Chorale: *Christus, der uns selig macht* / Christ, who makes us blessed and has done no wrong

The Interrogation by Pilate and Scourging

Evangelist, Pilate: *Da führeten sie Jesus* / Then they led Jesus to the governor's headquarters

Crowd: *Wäre dieser nicht ein Übeltäter* / If this man were not a criminal, we would not have brought him to you

Evangelist, Pilate: *Da sprach Pilatus zu ihnen* / Then Pilate said to them

Crowd: *Wir dürfen niemand töten* / We are not allowed to put anyone to death

Evangelist, Pilate, Jesus: *Auf daß erfüllet würde das Wort* / In this way was fulfilled the words

Chorale: *Ach großer König* / Ah, great king

Evangelist, Pilate, Jesus: *Da sprach Pilatus zu ihm* / Then Pilate said to him

Crowd: *Nicht diesen, sondern Barrabam* / Not this man, release Barabbas!

Evangelist: *Barrabas aber war ein Mörder* / Now Barrabas was a murderer

Arioso (B): *Betrachte, meine Seel* / Consider, my soul (Bass)

Aria (T): *Erwäge, wie sein blutgefärbter Rücken* / Ponder well how his back bloodstained

The Condemnation of Jesus

Evangelist: *Und die Kriegsknechte flochten eine Krone* / And the soldiers wove a crown

Crowd: *Sei begrüßet, lieber Jüdenkönig* / Hail to you, king of the Jews

Evangelist, Pilate: *Und gaben ihm Backenstreich* / And they gave him blows with their hands

Crowd: *Kreuzige, kreuzige* / Crucify him, crucify him!

Evangelist, Pilate: *Pilatus sprach zu ihnen* / Pilate said to them

Crowd: *Wir haben ein Gesetz* / We have a law

Evangelist, Pilate, Jesus: *Da Pilatus das Wort hörte* / When Pilate heard what they said

Chorale: *Durch dein Gefängnis, Gottes Sohn* / Through your imprisonment, son of God

Evangelist: *Die Jüden aber schrien und sprachen* / But the Jews cried out and said

Crowd: *Lässest du diesen los* / If you release this man

Evangelist, Pilate: *Da Pilatus das Wort hörte* / When Pilate heard what they said

Crowd: *Weg, weg mit dem* / Away with him

Evangelist, Pilate: *Spricht Pilatus zu ihnen* / Pilate said to them

Crowd: *Wir haben keinen König denn den Kaiser* / We have no king but Caesar

Evangelist: *Da überantwortete er ihn* / Then he handed him over

Aria (B) and Chorus: *Eilt, ihr angefochtenen Seelen* / Hurry, you tormented souls

The Crucifixion and Death of Jesus

Evangelist: *Allda kreuzigten sie ihn* / There they crucified him

Crowd: *Schreibe nicht: der Jüden König* / Do not write: the king of the Jews

Evangelist, Pilate: *Pilatus antwortet* / Pilate answered

Chorale: *In meines Herzens Grunde* / In the depths of my heart are your name and cross alone

Evangelist: *Die Kriegsknechte aber* / Then the soldiers, having crucified Jesus

Crowd: *Lasset uns den nicht zerteilen* / Let us not tear it

Evangelist, Jesus: *Auf dass erfüllet würde die Schrift* / So that the Scripture might be fulfilled

Chorale: *Er nahm alles wohl in acht* / He thought of everything in his last hour

Evangelist, Jesus: *Und von Stund an nahm sie der Jünger zu sich* / And from that hour the disciple looked after Mary

Aria (A) : *Es ist vollbracht* / It is accomplished

Evangelist: *Und neiget das Haupt* / And he bowed his head, and was gone

Aria (B) and Chorus: *Mein teurer Heiland, laß dich fragen* / My beloved savior, let me ask you

The Veil of the Temple

Evangelist: *Und siehe da, der Vorhang im Tempel zerriß* / And see, the Temple curtain was torn

Arioso (T): *Mein Herz, in dem die ganze Welt* / My heart, while the whole world

Aria (S): *Zerfließe, mein Herze* / Dissolve, my heart

The Burial of Jesus

Evangelist: *Die Jüden aber, die weil es der Rüsttag war* / But the Jews, because it was Passover

Chorale: *O hilf, Christe, Gottes Sohn* / Oh help, Christ, God's son.

Evangelist: *Darnach bat Pilatum Joseph von Arimathia* / Then Joseph of Arimathia asked Pilate

Epilogue

Chorus: *Ruht wohl, ihr heiligen Gebeine* / Rest well, you sacred bones

Chorale: *Ach Herr, lass dein lieb Engelein* / Ah Lord, let your dear little angel

GABRIEL DEYARMOND has sung in oratorios including *Messiah*, Bach's *Christmas Oratorio* and *St. Matthew Passion*, Mendelssohn's *Elijah*, and Mozart's *Solemn Vespers* and *Requiem*. In addition to Florestan in Beethoven's *Fidelio*, he has sung roles in *Tosca*, *Lohengrin*, *The Turn of The Screw*, *Alcina*, and *Gianni Schicchi*, among other operas. Currently residing in Albuquerque, he teaches voice and piano for New Mexico School of Music and his own voice studio. He holds an MM from the University of New Mexico and a BM from Central Michigan University.



GREGORY GALLAGHER has appeared on the operatic stage in over 40 different productions worldwide, spanning 20 different roles including Lindoro (*L'Italiana in Algeri*), Don Ottavio (*Don Giovanni*), Ferrando (*Così fan tutte*), Fenton (*Falstaff*), Peter Quint (*The Turn of the Screw*), Lysander (*A Midsummer Night's Dream*), and Rinuccio (*Gianni Schicchi*). Concert soloist in *Messiah*, *Elijah*, and Mozart's *Requiem*. Recipient of an Encouragement Award from the Metropolitan Opera.

ANDRÉ GARCÍA-NUTHMANN has sung with BachWorks in Manhattan, NY, and has been a featured soloist with the Santa Fe Community Orchestra, Santa Fe Symphony, Santa Fe Opera Outreach Program, the UNM Opera Studio, and New Mexico Bach Society. In 2009 he sang in Haydn's *Die sieben letzten Worte* in Eisenstadt as part of the Haydn 275th birthday celebration. Chair of the Visual & Performing Arts program at Highland University in Las Vegas, New Mexico, he holds a DMA in vocal performance from Arizona State University.



TJETT GERDORN, principal trumpet with LASO and the Los Alamos Community Winds, has performed with Opera Alta's "Opera on the Rocks" at the amphitheater in Bandelier National Monument. He has been a featured soloist with the Santa Fe Community Orchestra, Santa Fe Music Works, Coro de Cámara, Los Alamos Oratorio Society, and Los Alamos Choral Society. In addition to singing, Tjett has conducted performances with the Los Alamos Symphony Orchestra and the Los Alamos Oratorio Society.

PATRICIA HENNING has sung in various choirs in the US and the Netherlands, including the Wellesley College Choir, and Sangwij. In Albuquerque, she has sung with Quodlibet, UNM's Las Cantantes and Concert Choir, Polyphony, and Quintessence. She serves on the board of the Vocal Artistry Art Song Festival. On the UNM faculty in the physics and astronomy department, she conducts research using radio telescopes to study the evolution of galaxies, and teaches astronomy and Musical Acoustics physics.



KEHAR KOSLOWSKY has performed with the Santa Fe Symphony, Zia Singers, New Mexico Gay Men's Chorus, and the Santa Fe Women's Ensemble. As an early music specialist, her oratorio and solo work includes works by Bach, Handel, Vivaldi, and Mozart. She has sung with Cathedral Choral Society, Washington Bach Consort, Woodley Ensemble, and Saratoga Opera. A graduate of the University of Maryland, she has performed under the batons of Helmut Rilling, David Effron, Kenneth Slowik, and J. Reilly Lewis.

NANCY MARET has sung with the Santa Fe Symphony Chorus and First Presbyterian chancel choir. She has been a member of the Santa Fe Women's Ensemble for eight years. She recently retired from a long professional career in financial technology.



Actor, singer, and writer **JONAH SCOTT MENDELSON** was raised in Albuquerque. He received professional musical theater training at the Manhattan School of Music, and appeared in several musicals. Recent New Mexico appearances include "Love Alone: elegies for Rog," a theatrical work honoring victims of AIDS epidemic and based on the poetry of Paul Monette with performances at Teatro Paraguas in Santa Fe on October 1, 2023.

JAVIER ORTIZ has performed with the Amsterdam Concertgebouw, the Netherlands Opera, the Amsterdam Symphony Orchestra, Opera Studio Nederland, and the Chicago Arts Orchestra on tour in Mexico. Recently, he appeared in a condensed off-broadway version of *Nabucco*, headlined and in the film versions of the American Baroque Opera Company's *Dido & Aeneas* and Opera on Tap/Playground Opera's *La Cenerentola*. Upcoming roles include Somnus and Apollo in Eccle's *Semele* with The American Baroque Opera Company and Victor in *Before Night Falls* with Opera Southwest.



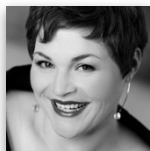
AMY OWENS assumed the role of director of the Young Voices of Santa Fe Opera in Fall of 2023. In 2022 she co-directed Opera Storytellers, a children's day camp run through Santa Fe Opera, developing a groundbreaking process for youth to compose and perform an original opera in five days. She also produced a two-week festival for students from her private vocal studio in Santa Fe. She holds a M.M. degree in vocal performance from Rice University and a B.M. in vocal performance from Brigham Young University.

ANDREW PAULSON has sung with Virginia Opera, Anchorage Opera, Opera Maine, Opera Southwest and Richmond Orchestra. His operatic repertoire includes *La Fanciulla del West*, *A Midsummer Night's Dream*, *The (R)evolution of Steve Jobs*, *Il Barbiere di Siviglia*, *Der Freischütz*, *Turandot*, and *Die Zauberflöte*. In addition, he has performed with the Utah, Virginia, and Jacksonville symphonies, and with Tallahassee Symphony in *Carmina Burana*, Dvořák's *Te Deum*, *Messiah*, and Beethoven's *Ninth*.



JENNIFER PEREZ holds an MM in vocal performance from the University of New Mexico. Operatic roles: Queen of the Night (*The Magic Flute*), Lucia (*Lucia di Lammermoor*), and *Fiordiligi* (*Così fan tutte*). Choral highlights: soloist in Bach's *Easter Oratorio* and *Magnificat*, Handel's *Judas Maccabeus*, Mozart's *Great Mass in C minor*, and MacMillan's *Seven Last Words from the Cross*. She has performed with the Oregon Bach Festival, Santa Fe Desert Chorale, and NM Philharmonic. She is also a member of NM Bach Society, Chatter, and Polyphony: Voices of New Mexico.

MELISSA RIEDEL, a New Mexico native, performs regularly in northern New Mexico and surrounding areas, along with teaching privately at her studio in Los Alamos. She enjoys performing classical music and opera, and has added musical theatre to her repertoire, recently performing as Countess Charlotte in *A Little Night Music* with Tri-M Productions. She has a Vocal Performance degree from the University of New Mexico.



AMANDA SIDEBOTTOM Amanda Sidebottom has been a soloist in Vivaldi's *Gloria*, Bach's *Jesu meine Freude*, and Handel's *Messiah*. A founding member of Etherea Vocal Ensemble, she has appeared at Weill Hall in New York City and has worked with such luminaries as Ellen Hargis, Stephen Stubbs, and Grant Herreid. As a choral singer, she has sung under William Christie, Nicholas McGegan, and with Mark Morris Dance Group, Trinity Wall Street Choir, Seraphic Fire, and Santa Fe Desert Chorale, where she is currently Operations Director.

HANNAH STEPHENS recently performed Mahler's Fourth Symphony with the New Mexico Philharmonic Orchestra and Gorecki's *Symphony of Sorrowful Songs* with the Albuquerque Philharmonic Orchestra. Some highlights of her operatic career include the Queen of the Night, Musetta, and Gilda. She enjoys the challenge of contemporary music and works with several composers on new works. Born in the United Kingdom, she received her Master's degree in Vocal Performance from Indiana University, studying with Carlos Montané, and her Bachelor's from the University of New Mexico, studying with Marilyn Tyler.



TIM WILLSON, a native of Greeley, Colorado, has sung operatic roles all over the country—at the Metropolitan Opera, Tulsa Opera, Santa Fe Opera, Opera Grand Rapids, Sacramento Opera, Opera North Carolina, and Amato Opera (New York). Now a Santa Fe resident, he has sung with the Santa Fe Symphony, the a Fe Pro Musica, and the NMPAS. As a docent at Las Golondrinas Living History Spanish Colonial Museum, he appears as a hide tanner and a buffalo hunter.

NEW MEXICO BACH SOCIETY ORCHESTRA



ELIZABETH BAKER moved to Taos in 2017 after 40 years with San Francisco Symphony and LA Philharmonic, where she was featured as soloist in three premieres. She has appeared at chamber music festivals in California and Oregon, Taos Chamber Music, Montage Society, Santa Fe Symphony, and Santa Fe Pro Musica. She has taught at the NM School for the Arts. She plays on a Sanctus Seraphin violin (1733) owned by her late mother Virginia Voigtländer Baker.

Joel Beckettell has performed on period and modern cello throughout North and Central America and Europe. Currently assistant principal cellist of the Santa Fe Symphony and a member of the ProMusica Chamber Orchestra of Columbus, he previously served as principal cellist of the Austin Symphony and Santa Fe Pro Musica, and as a member of the Buffalo Philharmonic Orchestra. He is a founding member of REVEL, Movable Sol, and the baroque ensemble BWV. His CD, Bach's Solo Cello Suites, Volume I, was released in 2014.



Texas native **KEVIN DARROW** was a member of with the Premier Air Force Concert Band in Washington, DC, for twelve years. He has performed as a soloist and chamber music clinician at many distinguished colleges, universities, and music festivals throughout the United States. He lives in Santa Fe with his partner Drew and daughter Dottie, and works as a music educator with Santa Fe Public Schools as well as with the Santa Fe Youth Symphony Association.

LISA GRODIN played with Philharmonia Baroque Orchestra for over twenty years and is currently its Director of Education. She has performed with Les Arts Florissants, Capella Savaria, La Cetra, Collegium Cartusianum, American Bach Soloists, Smithsonian Chamber Players, Santa Fe Pro Musica, and Del Sol Quartet. Since moving to Santa Fe in 2021, she has performed in the free MarketMusic series spearheaded by Several Friends. She studied at Oberlin Conservatory and earned a master's degree on a fellowship at Eastman School of Music.



SALLY GUENTHER grew up in Albuquerque and obtained an undergraduate degree in violin performance at the University of New Mexico. She plays in the New Mexico Philharmonic, Santa Fe Symphony, Opera Southwest, New Mexico Performing Arts Society, and Chatter Albuquerque, among others. She was an associate member of the Civic Orchestra of Chicago for the 2017-2018 season and has performed in festivals throughout the United States, Brazil, and South Africa.

ELAINE HELTMAN has been the principal oboe of the Santa Fe Symphony Orchestra and Chorus since its inception in 1983, and with the Musica Camerata Ensemble (Santa Fe Concert Association) for twenty seasons. She has also been principal oboe with the Chamber Orchestra of Albuquerque and Southwest Opera, among others. Abroad she has played with the Filarmónica de Caracas, Jerusalem Radio Symphony, and Israel Chamber Orchestra. In addition, she has appeared with the New Mexico Woodwind Quintet and the Santa Fe Opera.



JOYCE HUANG has performed with the Phoenix Symphony, Apollo Ensemble, Dartmouth Symphony, Philharmonia Boston, among others, and at several major venues including Boston Symphony Hall, Jordan Hall, Metropolitan Museum of Art, and the National Concert Hall in Taiwan. A top prizewinner at the Duxbury Music Festival competitions (2017) and first prizewinner at the American Protégé International Competition (2021), she made her debut at Carnegie's Weill Recital Hall in December 2022. She earned BM and MM degrees from Boston University.

LIDIJA PENO KELLY has performed as soloist with the Belgrade Radio Symphony Orchestra, Dubrovnik Philharmonic, La Piccola Sinfonia di Venezia, and the Gärtnerplatz Theater Orchestra. Currently she plays with the New Mexico Philharmonic, Santa Fe Symphony, and the New Hampshire Music Festival Orchestra. She received a BM and an MM from the Academy of Music in Novi Sad, a Performance Diploma from the Accademia Internazionale di Musica a Portogruaro in Venice, and took further studies at the Richard Strauss Konservatorium in Munich and the Boston Conservatory.



CARLA KOUNTOUPES has performed with Santa Fe Symphony, Arizona Opera, Santa Fe Pro Musica Chamber Orchestra, and Piazzolla da Camera Piano Trio, as well the Nacha Mendez Latin World Trio. She has toured Central America, Taiwan, Germany, and the United States. A graduate of Oberlin Conservatory (Violin Performance), she is currently on the faculty of the New Mexico School for the Arts. Her 1740s violin was inherited from her grandfather.
www.ckviolin.com

ALAN MAR performs with Santa Fe Symphony, New Mexico Philharmonic, and Las Cruces Symphony. He was concertmaster of the Pasadena Youth Symphony for two years, then he took a prolonged hiatus from the violin to attend graduate school in electrical engineering at the University of California, Santa Barbara. After moving to Albuquerque he again took up the violin with Leonard Felberg.



LINDA MARIANIELLO has performed at European festivals in Bayreuth, Salzburg, Potsdam-Sanssouci, Oberammergau, Deya-Mallorca, Elba and Graz. In addition to concert series throughout the United States, she has been a frequent guest at National Flute Association conventions. She has also appeared in live television broadcasts on ORB-Berlin, Spanish National Television, Austrian National Television, Bavarian Television, and numerous PBS stations. She is a Verne Q. Powell Artist with a YouTube platform at www.youtube.com/channel/UCU1N0k9J-Uw4gn8OsJVe_YA.

VICKIE BELL SCHAEVITZ has performed with the Sacramento Philharmonic, Folsom Lake Symphony, and Auburn Symphony, as well as with numerous chamber groups, including the Camellia City Flute Choir and Santa Fe Flutes. A founder of the Sacramento Flute Club, she is a certified Suzuki Flute instructor and teaches flute in the Santa Fe Public Schools. She earned a BM from Boston University and an MM in Flute Performance from the University of Colorado.

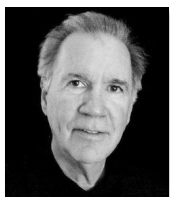


MATTHEW SEBALD has performed on piano and harpsichord in small and large ensembles includes the Red River Trio, the University of North Dakota Chamber Orchestra, Colorado University Boulder Symphony Orchestra and Chamber Singers. An accomplished soloist, he has won the 2016 Bismarck-Mandan Symphony Orchestra Concerto competition and University of North Dakota's 2015 Mozart Piano Concerto competition. He recently graduated with a Master of Music degree in Collaborative Piano from Colorado University Boulder and is pursuing his DMA.

JEFFREY SMITH has performed with many early music groups and festivals including Santa Fe Pro Musica Baroque Ensemble, Jeune Orchestre de l'Abbaye, the Bloomington Bach Cantata Project, and the Bloomington Early Music Festival, among others. In 2016, he was viola soloist in Mozart's *Sinfonia Concertante* at the La Petite Bande Summer Academy under the direction of Sigiswald Kuijken. On modern violin he has appeared with the Santa Fe Pro Musica Orchestra, San Juan Symphony, Opera Southwest, and Santa Fe Symphony.



FRANZ VOTE, ARTISTIC DIRECTOR & CONDUCTOR



A native of Los Angeles, **FRANZ VOTE** studied at California State University Northridge and served on the faculties of the Aspen Music Festival and the Eastman School of Music. His first post as opera conductor was at the Musiktheater im Revier in Gelsenkirchen, Germany. He also conducted in Aachen, at the Gaertnerplatz Theater in Munich and the Theater des Westens in Berlin. These experiences in German opera houses led to an engagement as Assistant Conductor to Daniel Barenboim and James Levine at the Bayreuth Festival. James Levine then invited him to join the Metropolitan Opera

conducting staff for many performances including the 1996 New Year's Eve Gala. Plácido Domingo invited him to lead Tokyo's Kanagawa Orchestra for the *Operalia* Vocal Competition.

Maestro Vote's international prominence, especially in German music, led to his appointment as musical director of Wagner's *Ring der Nibelungen* in Seattle in 2001, which performances were lauded by the New York Times and many other important media outlets.

LINDA MARIANELLO, EXECUTIVE DIRECTOR

(see page 9 for her bio)



**SANTA FE
COMMUNITY
FOUNDATION**

ABOUT THE PROGRAM

Written during his first year in Leipzig, *The Passion according to St. John*, the earliest surviving passion by Bach, was first performed at Good Friday Vespers on April 7, 1724. It was originally intended for St. Thomas Church, but a last-minute change by the music council moved it to St. Nicholas Church. The following year Bach presented the *St. John Passion*, with many revisions, at St. Thomas Church. A third version followed in 1732, and a fourth in 1749. The eminent Bach scholar Christoph Wolff confirms that this fourth version was close to that of 1724, but with larger musical forces. It is not Bach's first passion; that was written in Weimar but is now lost.

The anonymous libretto of *St. John Passion* draws on existing works, the *Brockes Passion* by Barthold Heinrich Brockes (1680-1747) and *Johannes Passion* by Christian Heinrich Postel (1658-1705); the Gospel account taken directly from chapters 18 and 19 of the Gospel of John, as translated by Martin Luther, is conveyed by recitatives and choruses, while ariosos and arias reflect on the action, and chorales used hymns familiar at the time. Often compared to the *St. Matthew Passion*, it has been deemed "more extravagant, with an expressive immediacy, at times more unbridled and less 'finished'" than the later work. Today it is most often heard in the 1739-1749 version never performed during Bach's lifetime. The first performance in the Americas was given by the Choral Union of 1888 directed by Fred Wolle in the Moravian town of Bethlehem, Pennsylvania. The German musicologist Christoph Wolff has observed: "Bach experimented with the *St John Passion* as he did with no other large-scale composition," and concludes that it must have been "close to his heart, "as the work accompanied him right from his first year as Cantor of St. Thomas to the penultimate year of his life."

The epic scope of the work is evident right from the opening chorus: "Lord, show us by your Passion that you triumph even in deepest humiliation." Then the story, narrated in recitative by the Evangelist, begins after the Last Supper. Jesus leads his disciples to the Garden of Gethsemane, located between Jerusalem and the Mount of Olive, to sit with him as he prays. But Judas has betrayed him, and soldiers come to take Jesus away. The armed soldiers arrive with torches; Jesus asks, "Whom do you seek?" and the soldiers answer, "Jesus of Nazareth!" Here the chorus plays the part of the crowd of soldiers, one of the roles it plays. Again Jesus asks, "Whom do you seek?" and again the soldiers answer. Then Jesus says, "I have told you I am the one you want. Let my disciples go." At this point comes the first commentary in the form of a chorale, "What great love it was for me that you took upon this suffering." The Lutheran chorales which often followed the arias, personally selected by Bach, were familiar to all in his congregation, their purpose is to unify the listeners in a common shared experience. A Yale professor describes a unique feature of the chorale texts: "Many of them are in the first person. This choice . . . is meant to draw the hearer into the story but also to make a broad theological point, reflecting the importance of the individual's personal relationship to the passion story in Lutheran theology."

Peter draws his sword and cuts off the ear of the high priest's servant. Jesus tells him to put away his sword. Another commentary follows. The people ask to be as faithful to God's will in their lives as Jesus was. In the next recitative Jesus is tied up and led away. The commentary that follows is the aria of the piece assigned to the alto: "Jesus allowed himself to be bound so that I can be unbound from my sins." The next aria, after a brief return to the narrative, is given to a soprano: "I will follow you, my life and light." The next chorale asks, "Who struck you, Jesus?" and in reply, "I and my sins were the cause." Then Peter is accused by the crowd, "Aren't you one of his?" Peter denies this three times, and when the cock crows, as Jesus had foretold, Peter weeps bitterly. The tenor's aria is Peter's song of remorse and anguish. The chorale that follows ends Part I. It ends with a plea, "Jesus, look at me when I sin!"

A lengthy commentary in the form of an aria with chorus begins Part II. Jesus is taken to the high priest Caiphas and then to Pontius Pilate. When Pilate asks the crowd, "What charge do you bring against this man?" the crowd replies, "We wouldn't have brought him here if he weren't a criminal!" Pilate asks Jesus "Are you the King of the Jews?" Jesus answers, "My kingdom is not of this world." The chorale that follows is a commentary that the mercy of God is impossible to fathom. Pilate then offers the crowd a choice of which of two prisoners he should release, Jesus or Barabbas. They cry out, "Barabbas!" Pilate then orders Jesus to be scourged. The bass aria that follows conveys that the greatest good results in Jesus' suffering.. A tenor aria expresses the same theology.

The soldiers place a crown of thorns and purple cloak on Jesus. They mock him in a chorus, "Hail, King of the Jews!" The next chorale offers the central theological theme of the entire work—the Victory of the Cross: "From your imprisonment comes our freedom." A bass aria follows, "Hurry to Golgotha!" The chorale "In meine Herzen" serves as a transition to the final moments of Jesus' life. In the next recitative Jesus' mother and the beloved disciple (St. John) gather beneath Jesus on the Cross. Jesus utters his final words in the next recitative: "Es ist vollbracht!" It is ended. The alto aria is a lament but it proclaims the ultimate victory. After a quiet recitative announcing Jesus' death, another recitative recounts how the veil of the temple is torn and the earth quakes. In the arioso the tenor asks, "My heart, what will you now do?" The following soprano aria answers, "Dissolve, my heart, in floods of tears, because Jesus is dead."

The next recitative ties up many loose ends of the story, each with a different emotional expression. The chorale, "O hilf, Christ," is followed by final chorus: *Ruht wohl, ihr heiligen Gebeine* (Rest well, you sacred bones). The concluding chorale is a prayer: "Lord, when I die, send your angels to take me to Abraham's bosom where there is no pain. Then, at the last day, wake me from sleep so that I may see you. I glorify you eternally!"

(Compiled from various commentaries)



NMPAS SUSTAINER CIRCLE* (\$10,000 - \$50,000+)

NMPAS is deeply grateful to members of the SUSTAINER CIRCLE for cumulative support of \$10,000-\$50,000+

Aaron** & Naomi Alter
Judith Auer & George Lawrence
Rachel Belash & Bob Burman +
Del Norte Credit Union & Del Norte LOV Foundation
Bette Evans & Mike Makoid
André García-Nuthmann**
Norman & Suzanne George
Richard G. Kurman (1927-2020) +
Los Alamos National Bank
New MexicoArts
New Mexico Highlands University Foundation
Michael Middleton & Patrick Ryan
Santa Fe Arts Commission
Santa Fe Arts & Culture Department
Santa Fe Community Foundation
Jeff Snodgrass, Director, Immaculate Heart of Mary Retreat Center
UNM John Donald Robb Musical Trust
David** and Megan Van Winkle
Verne Q. Powell Flutes
Franz Vote** & Linda Marianiello**
Judy Williams & Elliot Stern**

LEAD GIFTS: ST. JOHN PASSION PROJECT

Aaron Alter
Norman and Suzanne George
Bernhard Holzapfel (*In Memory of Barbara Holzapfel*)
Peter Merrill and Ruth Wallack
Michael Middleton
New Mexico Arts
Santa Fe Arts & Culture Department

NMPAS ANNUAL FUND 2022-2024

Special thanks to donors to the NMPAS Annual Fund in the period from July 1, 2022 through August 16, 2024

PLATINUM CIRCLE (\$10,000 or more)

Aaron** & Naomi Alter
Richard G. Kurman (1927-2020) +
Norman & Suzanne George
Bernhard Holzapfel (*In Memory of Barbara Holzapfel*)
Michael Middleton & Patrick Ryan: *Co-sponsoring the 2023 New Mexico Bach Society Concdrts and World Premiere of "Earth Cantata"*
New Mexico Arts
New Mexico Arts ARP Grant 2023
New Mexico Highlands University Foundation
Santa Fe Arts & Culture Department
Santa Fe Community Foundation Fall 2022 Competitive Grant
David** & Megan Van Winkle

GOLD CIRCLE (\$7,500-\$9,999)

Richard** & Sophia Skolnik

SILVER CIRCLE (\$5,000-\$7,499)

Charles T. Hendrix +
Stuart Brown
Rachel Belash & Bob Burman +
Peter Merrill** & Ruth Wallack (*Sponsoring André García-Nuthmann & Tom Willson for 2023 Winter Solstice & Cantata Series I*)
Del Norte LOV Foundation

BRONZE CIRCLE (\$2,000-\$4,999)

Judith & George Lawrence
David Beatty (*sponsoring Travis Bregier in 2021-22*)
Century Bank
George & Marcia + deGarmo
Spring 2020 & 2023 Facebook Fundraisers
Giving Tuesday 2021-2023 Facebook Fundraisers
Michael Freccia
Gregory & Mary Alice Gillette
Drs. Tomás C. Hernández & Keith S. Reas
New Mexico Institute of Mining and Technology
100 Women Who Care
Santa Fe Community Foundation COVID-19 Response Fund
William & Joyce Smith: The Vila Fund at Santa Fe Community Foundation
Western New Mexico University
Charlie & Leah Wilkins
Dean Yannias

SPONSOR (\$1,000-\$1,999)

Anonymous Individual
James Ammerman & Anne Chognard
Elizabeth Baker** & Toby Pugh
Sue Schaefer Baum
Virginia & Ed Flutz
Garcia Automotive Group Endowment--
Albuquerque Community Foundation
Hoffman-Bravy Charitable Foundation
Joyce Idema
Grayson & Jenifer Kirtland
Pamela Levin**
Nancy Maret & Tim Willson
Mike Middleton: *lead gift for 2024 Indiegogo campaign*
Gary & Mary Moses
Santa Fe Downtown Rotary Foundation
Judy Williams & Elliot Stern**

ADVOCATE (\$750-\$999)

Anonymous
John Adams
Keith K. Anderson & Barbara Lenssen
Patricia Henning** & Tony Lazzaro
Verne Q. Powell Flutes
Steve & Lois + Rudnick
Arthur & Ann Weinstein

DONOR (\$500-\$749)

Anonymous Corporate Donor
 Allan Affeldt** & Tina Mion
 Elizabeth Auer
 Charles G. Case II** & Pamela Culwell
 John & Lanie Dickel
 Ellen Gayle Hamlin Foundation
 Gale G. Hannigan
 Joan & Jeffrey Less
 Richard & Susan Lindeborg
 Jean-Michel & Karla Rendu

PATRON (\$250-\$499)

Anonymous Individual
 Anonymous Individual
 Janice J. Arrott
 John** & Barbara + Berkenfield
 James** & Diane Bonnell
 Meg Bowles, Richard & Hannah Price
 Dwight & Laura Cramer
 Sreeram & Nancy Dhurjaty
 Judith Diamond & Charles Angevine
 Bette Evans & Mike Makoid
 John & Margaret Geffroy
 Robert Glick** & Jacqueline Helin
 Robert Hohlfelder
 Paul & Diane Isaacson
 David Johnson & Sheila Conneen
 Edwina Lieb
 The Rev. Hampton Mabry+ & Cha Foxhall
 Enrique & Ruth Ortega
 Marianne Reuter
 Marco & Helen Rizzo
 Buddy & Irene Roybal
 Hassan & Caralu Salam
 Santa Fe Area Home Builders Association
 Martha and Ken Simonsen*
 Solon Snider Sway & Emma Sway
 Rachel Wixom**

SUPPORTER (\$100-\$249)

Anonymous Individual
 Anonymous Individual
 Anonymous Individual
 Janice J. Arrott
 Bob Attiyeh
 Adele Caruthers
 Barbara Chatterjee
 Mary Cummings
 Daniel & Luann Dehlinger
 Emily Drabanski
 Anne Dwyer
 Barbara Fields
 Leila Hall
 Steve & Rebecca Howard
 Chase & Christine Keightley
 Regina Klapper
 Kenneth Knight & Richard Morehead
 Deniece Korzekwa
 Cynthia Lawrence
 Donald Levering
 Ruth Linton

SUPPORTER (continued)

Bob MacPherson
 Bonnie McClain
 Jean A. McCray
 Marguerite McGregor
 Janet & Charles McMillan
 Esther Moses**
 Liesi Odenweller
 Charles H. Palmer
 Alexis Perry-Holby
 David Ponder**
 James S. Rubin & Carolyn Eason
 Barbara J. Rugg
 Vicki Schaevitz
 John Serkin & Catherine Kurland
 Dr. Peter & Jody Spalding
 John & Cindi Stetson
 Robert Swedberg
 Roy & Enid Tidwell
 Camille Tierney
 Howard & Cynthia Turner
 Ken Tutunjian
 John Voorhees
 Beth & Tim Wallace
 Mary Ann Watjen
 Vernon Yenne
 Norman & Barbara Yoffee

FRIEND (\$25-\$99)

Carla Auld
 Joan Bearzi
 Gwyneth Bertocki
 Gerard Bradley
 Edith Brown
 Lydell Brown
 Katherine Chilton
 Susan Christensen
 Brian Corbishley
 Wayne Darnell & Susan Johnson
 Mindy & Charles DeMott
 Tracy Kane Doyle
 Mary Drexler
 Nancy Dunn
 Laura Fallon
 Jesse Finkelstein & Mary Standfield Finkelstein
 Barbara Fix
 Christopher Gibson
 Alan Gilmore
 Thomas Goodrich
 Elssa Green
 Paul & Kathleen Guiles
 Ken Hare
 Steven Hecht
 John Hoopes
 Brian & Anne Huysman
 Davida Kagen
 Bo Keppel
 George Kopp
 Lynn Lee
 Raymond B. Lyon
 Jane S. MacNeil
 Sheila Maolney Shotzberger
 Curtis Marks

FRIEND *(continued)*

Linda Marks
 Ann Mauzy
 Sharon McCawley
 Ann-Marie McKelvey
 Chase Navarre
 Marie Newsom
 Bob Norris
 Sue Patchell & Brett Hamilton
 Vicky Pavlis
 David Perlowin + & Paula Scarpellino
 Chantal Quincy
 Gail Robertson
 Wendy Rolfe
 Patrick J. Russell & Tee M. Boursaw
 Gail P. Samota & Hall A. Acuff
 Mary Helen Schaubhuth
 Elena Sopoci
 Jane Evans Varner
 Andy Vincent
 Mary Winegartner
 Cynthia Wooley
 T. Spencer Wright
 Mona Zeffel

FACEBOOK 2023 GIVING TUESDAY GIFTS

Aaron Alter**
 Camille Avellano
 Janet Bratton
 Barbara Cohen
 Tracy Doyle
 Aimee Fincher
 Alan Gilmore
 Linda Marianiello**
 Bob Norris
 Patrick Pickering
 Elena Sopoci
 Jane Evans Varner
 Andy Vincent
 Tim Willson & Nancy Maret
 Cynthia Wooley

IN-KIND DONATIONS

Anonymous
 Allan Affeldt
 The Archdiocese of Santa Fe
 James Bonnell, Madden Hosea & Associates**
 Lisa Buckley*

IN-KIND DONATIONS *(continued)*

Barbara Chatterjee*
 Fitzhugh Cline*
 Donna Eagles*
 Nanette Ely-Davies
 Donna Eagles*
 Nanette Ely-Davies
 Bette Evans*
 Jo Fisher*
 Michael Freccia
 Gregory Gillette
 Robert Glick**
 Alex Hanna / Invisible City Designs
 Tomás C. Hernández
 Hutton Broadcasting
 Joyce Idema
 Immaculate Heart of Mary Retreat and
 Conference Center*
 Carol A. Karps (CAK Associates / professional
 grant writing and consulting)
 Jenifer Kirtland
 Regina Klapper*
 KHFM Radio
 Joan Lamarque*
 John Loehr & Meg Keen
 Mike Makoid*
 Linda Marianiello**
 Peter G. Merrill**
 Moern Elder Academy
 Ruth Ortega, Ortega Insurance Services The
 Plaza Hotel (Las Vegas, NM)
 David G. Ponder**
 James S. Rubin
 John Sadd
 Saint Michael & All Angels Episcopal Church
 Gail Samota*
 Santa Fe Institute's 2019 InterPlanetary Festival
 The Santa Fe New Mexican
 John Serkin
 Ken & Martha Simonsen*
 Jeff Snodgrass
 Nadine F. Stafford
 Elliot Stern**
 Drew Stewart
 Total Wine & More
 True Kids 1
 United Church of Santa Fe
 David Van Winkle**
 Franz Vote**
 Tim Willson

* Guild Member

**Current or past NMPAS Board Member

+ Deceased

NMPAS THIRTEENTH SEASON 2024-2025

BACH'S ST. JOHN PASSION, BWV 245

Friday, Sept. 6, 2024 at 6:00 pm ~ Immaculate Heart of Mary Chapel, Santa Fe

Saturday, Sept. 8, 2024 at 5:30 pm ~ Hope in the Desert Episcopal, Albuquerque (*Sponsored by Aaron Alter, Norman & Suzanne George, Bernhard Holzapfel, Peter Merrill & Ruth Wallack, Michael Middleton, New Mexico Arts, and Santa Fe Arts & Culture Department*)

HANDEL'S MESSIAH

Sunday, Nov. 3, 2024 at 4:00 pm ~ Ilfeld Auditorium, NM Highlands University

(*presented by NMPAS, NM Highlands University, Taos Community Choirs*)

WINTER SOLSTICE CONCERTS: Music for the Holiday Season

Friday, Nov. 29, 2024 at 7:00 pm ~ Immaculate Heart of Mary Chapel, Santa Fe

Sunday, Dec. 1, 2024 at 5:30 pm ~ Hope in the Desert Episcopal, Albuquerque

CHAMBER MUSIC SERIES I

Friday, Jan. 10, 2025 at 7:00 pm ~ Immaculate Heart of Mary Chapel, Santa Fe

Sunday, Jan. 12, 2025 at 5:30 pm ~ Hope in the Desert Episcopal, Albuquerque

CHAMBER MUSIC SERIES II

Art + Sol Festival in Santa Fe

Saturday, Feb. 15, 2025 at 7:30 pm ~ Location TBD

ANNUAL NEW MEXICO BACH SOCIETY CONCERTS

Bach's Cantata BWV 21 and Aaron Alter's Psalm 144

Friday, March 21, 2025 at 7:00 pm ~ Location TBD, Santa Fe,

Sunday, Ma

rch 23, 2025 at 5:30 pm ~ Hope in the Desert Episcopal, Albuquerque

CHAMBER MUSIC SERIES III

Music for soprano, clarinet, viola and piano

Saturday, Apr. 5, 2025 at 7:00 pm ~ Location TBD, Santa Fe

SEASON FINALE OPERA CONCERTS

Friday, June 6, 2025 at 7:00 pm ~ Location TBD, Santa Fe

Sunday, June 8, 2025 at 5:30 pm ~ Hope in the Desert Episcopal, Albuquerque

PERIOD INSTRUMENT COLLABORATION with BWV of Albuquerque

Weekend of June 27-29, 2025* in Albuquerque and Los Alamos

Please watch the NMPAS website for updates: nmpas.org

The New Mexico Performing Arts Society

7038 Camino Rojo, Santa Fe, NM 87507

Phone: 505-474-4513 Email: info@nmpas.org Website: www.nmpas.org

Governing Board

Linda Marianiello, *President/NMPAS Executive Director/Professional Musician*
Franz Vote, *Vice President/Artistic Director/Metropolitan Opera conductor emeritus*
Esther Moses Bergh, *Secretary/Professional Singer/Music Educator, Albuquerque, NM*
Aaron Alter, *Board Member-at-Large/IT Consultant/Composer, Carlsbad, CA*
Daniel Schwab, *Board Member-at-Large/Professional Musician and City Planner, Santa Fe, NM*
Elizabeth Baker, *Board Member-at-Large, Taos, NM*

Advisory Board

James Bonnell, *Madden Hosea & Assoc (Ret.)/Fundraising Consultant/former violist NM Sym (Ret.), Albuquerque, NM*
Gregory Gallagher, *Director of Worship and Music, St. Stephen's United Methodist Church, Albuquerque*
Patricia Henning, *astrophysicist, Socorro, NM*
Elliot Stern, *Amenergy, Inc., Santa Fe, NM*
Rachel de W. Wixom, *CEO, Ralph T. Coe Center for the Arts, Santa Fe, NM*

NMPAS Emeritus Board Members

John F. Andrews, *Shakespeare scholar, Santa Fe, NM*
Bob Ansheles, *Development Professional, Santa Fe, NM*
John Berkenfield, *Executive Director, El Rancho de las Golondrinas/IBM Exec. (Ret.), Santa Fe, NM*
Chuck Case, *Federal Judge and Lawyer (Ret.), Phoenix, AZ and Santa Fe, NM*
Linda Childers, *Founder/Fine Artist, Santa Fe, NM*
Monika Cosson, *Founder/Professional Singer, New Orleans, LA*
Donna Elliot, *CPA (Ret.), Santa Fe, NM*
André García-Nuthmann, *New Mexico Highlands University, Las Vegas, NM*
Robert Glick, *Fundraising Professional (Ret.), Santa Fe, NM*
Scott Haley, *CPA, Albuquerque, NM*
Christopher Ihlefeld, *Founder/Amateur Choral Singer/Thornburg Investment Mgr, Santa Fe, NM*
Brian Lee, *CPA, Santa Fe, NM*
Kayla Liechty, *Collaborative Pianist and Faculty, Eastern New Mexico University, Portales, NM*
Peter Merrill, *Construction Dispute Resolution Services, Santa Fe, NM*
David G. Ponder, *Accountant and NMPAS Treasurer, Santa Fe, NM*
Steven Rudnick, *Board Member at Large, Climate Scientist (Ret.), Santa Fe, NM*
Richard Skolnik, *World Health Expert and Amateur Guitarist, White Rock, NM*
Lori Stevens, *Corporate Executive, Santa Fe, NM*
James M. White, *Board Member-at-Large/Atty (Ret.), Taos, NM*
David Van Winkle, *Board Member at Large, Texas Instruments Executive and Amateur Pianist (Ret.), Santa Fe, NM*

Staff and Consultants

Daniel Schwab, *Administrative Assistant*
Leah Romero, *Media Outreach Coordinator*
David G. Ponder, *Accountant*
Shannon Whitehead, *Webmaster*

**The New Mexico Performing Arts Society is a 501(c)(3) public charity.
Donations to NMPAS are tax-deductible to the extent allowed by law.**



Like us on Facebook.

Just type in #NMPERARTS and share with your Facebook friends!



CORONADO
PAINT & DECORATING

Santa Fe's One-Stop for
FLOORING | TILE | PAINT | SHADES

Including trusted brands

HUNTER DOUGLAS BENJAMIN MOORE AMERICAN CLAY

Call or Come by to Schedule Your
Free Estimate or Design Consultation Today!

505-473-5333

2929 Cerrillos Road, Santa Fe, NM 87507
coronadodecorating.com



EST. 1984

CORONADO
PAINT & DECORATING

**PROUDLY EMPLOYEE
OWNED SINCE 2022**

Rotary

Club of Santa Fe Foundation



NEED HELP TO MANAGE?

Financial advice for people and organizations like you.



JOHN R. ADAMS

Financial Advisor

125 Lincoln Avenue, Suite 200
Santa Fe, NM 87501
O 505.982.1904 // TF 800.233.4108
john.adams@raymondjames.com
johnradams.net

Free review of your goals and needs.

RAYMOND JAMES®

Raymond James & Associates, Inc., member New York Stock Exchange/SIPC. 19-BR3HL-0033 AW 7/19

Herndon Audio

New Mexico's Audiophile Reference



We invite you to come and hear all of the performance details in your music on our fine audio systems. Budget to Ultimate.

HerndonAudio.com 515-818-8643